

Rathdown with extension

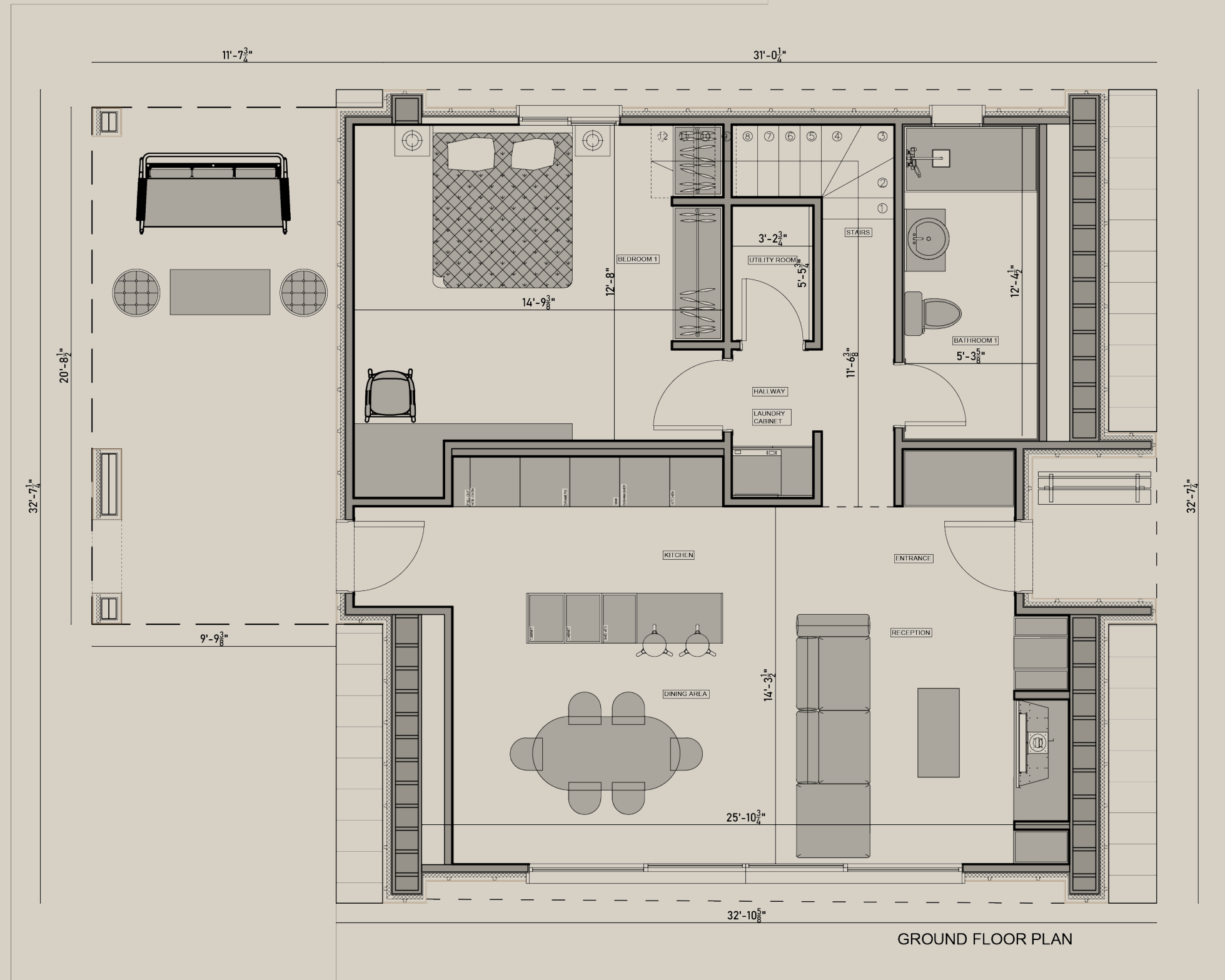
Floor plans



Floor plan

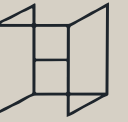
Ground floor

Total Area: 1237 sq. ft.



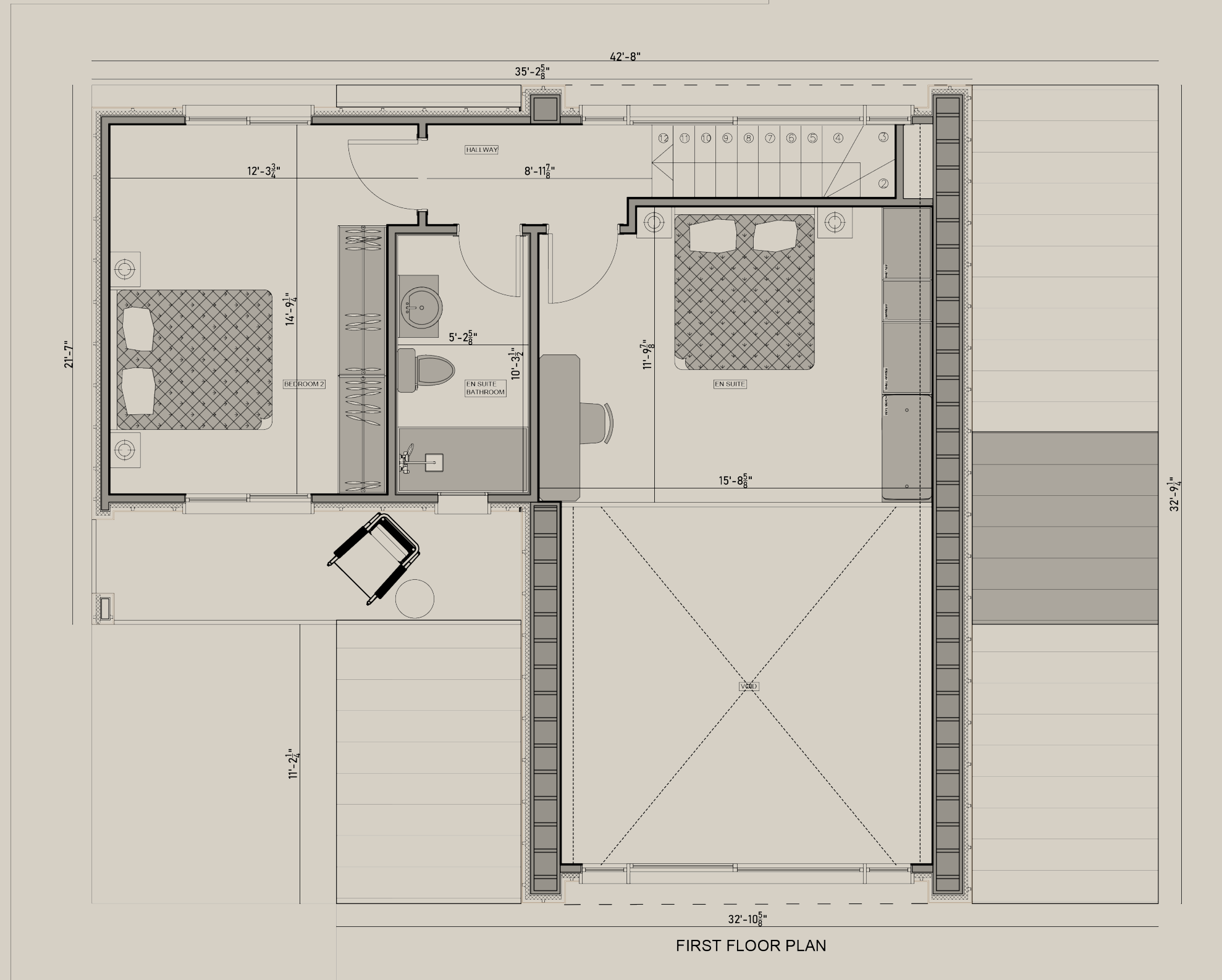
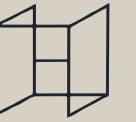
Ground Floor 780 Sq.ft

- Internal living area (reception + dining)
Area: 260 sq. ft.
- Internal kitchen area
Area: 115 sq. ft.
- Bedroom 1
Area: 194 sq. ft.
- Bathroom 1
Area: 67 sq. ft.



Floor plan

First floor



First Floor 456 Sq.ft

- **Bedroom 2**
Area: 168 sq. ft.
- **En suite bedroom**
Area: 181 sq. ft.
- **Bathroom en suite**
Area: 67 sq. ft.